

2.5Gbps Base-T WebSmart Multi Gigabit Switch

26-Port Multi Giga incl 24x 2.5G RJ45, 2 x SFP+ 10G

WEB-2TX2402

airlive®



24-port
100/1000M/2.5G

Web
Managed

QoS

Multi-Gigabit
Auto-negotiation

Cat.5e cable
suitable

2x 10G SFP+
Uplink

Bandwidth
Control

VLAN

Loop
Protection

Surge/ESD
protection

Overview

Painless Upgrading your Network Connection to 2.5Gbps & SFP+ 10G Super High speed Web Management Switch

The AirLive Multi-Giga switch, WEB-2TX2402, is a Web Managed switch, which supports 24 RJ45 and 2 SFP+ ports for delivering up to 2.5Gbps extra high-speed connection on RJ-45 and 10G SFP+ on fiber optic. Supports WEB Management function and is easy to manage and maintain. The easy to operate WEB-2TX2402 has several functions like VLAN setting for a more secure connection. QoS to have more control of the bandwidth and many more like, IGMP, Loop Prevention, Port-Base Mirroring, Port Isolation, Bandwidth Control, Security (MAC Address /table /search /static MAC; Storm control and more. With the 2.5G multi-Giga switch, you can connect to a variety of 2.5GbE-enabled devices, such as NAS | NVR | PC | Server | Laptop, for enjoying faster experience and handle bandwidth-hungry applications. Designed in a slim sized solid housing, it's an affordable, space-saving solution suitable to Home and SMB network applications.



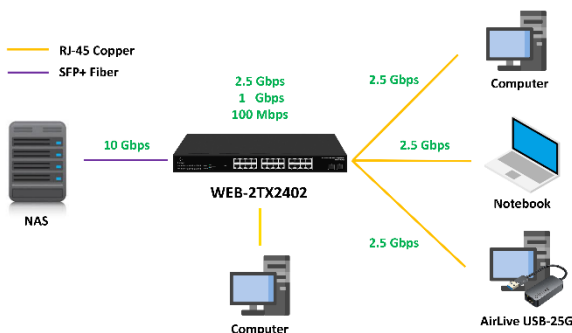
10/100/1000/2500Mbps RJ-45 Port

1/2.5/10G SFP+ Port

Features and Specifications

AirLive WEB-2TX2402 2.5Gbps Switch with SFP+ 10G

- 24 x 10/100/1000/2500Mbps RJ45
- 2x 10G SFP+
- Web Smart Management
- QoS; Priority management
- VLAN: enhanced security and performance
- Loopback Detection
- All ports at Multi Gigabit high speed, auto-negotiation
- Providing satisfied bandwidth for various network devices, such as online gaming, multi-media, NAS, Server system
- Super Fast 2.5Gbps RJ-45 and 10Gbps SFP+ Networking
- Existing Cat5e cable suitable, painless upgrading
- Compact size for Home or SMB Network Connectivity



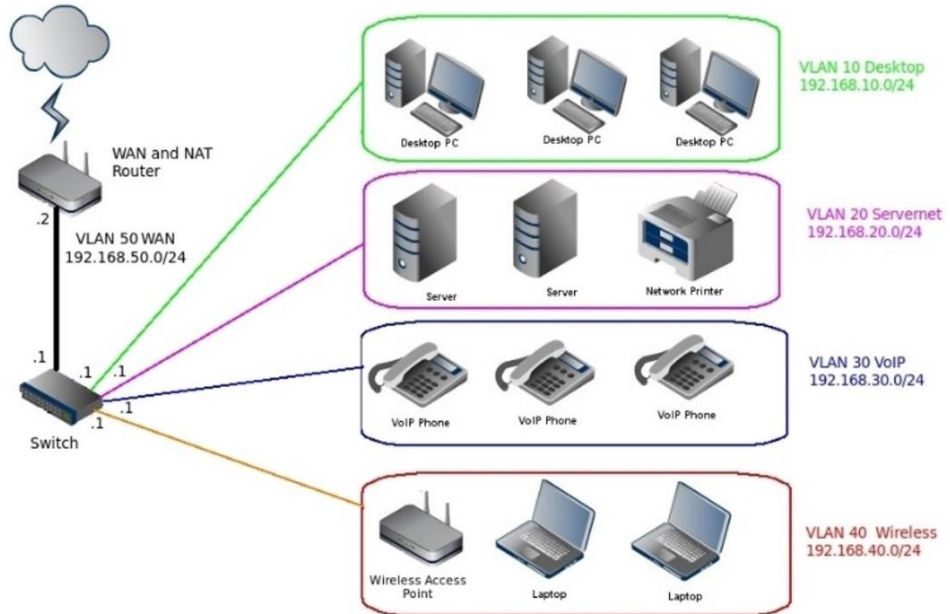
Built for High-Speed connectivity

Multi Gigabit for Interconnect

With the AirLive WEB-2TX2402 2.5Gbps switch, it is possible to connect several high-speed devices together via RJ-45 connections using a normal Cat.5e network cable. Higher bandwidth improves the playback quality of 4K/8K videos, prevents lag for Gaming, smooths speed when download or upload large data, increases data transfer speed when doing backup to a NAS drive. Use the 10G SFP+ as uplink to a larger network with higher speed.

VLAN for enhanced network security

The VLAN 802.1Q VLAN tagging settings can be used to separate traffic within a business such as isolating resources between network administrators and general users or between employees and public guest users. With the help of VLAN interface, switches can communicate with other network layer devices.

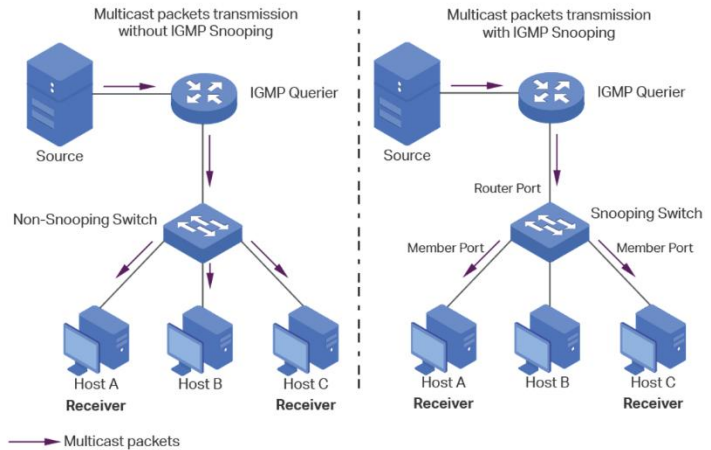


QoS for enhanced traffic control

QoS (Quality of service) is the ability to provide different priority to different applications, users, or video/voice/data flows, or to guarantee a stable level of performance to each data flow. This can be with Port-based Priority or Priority to queue.

IGMP Snooping Multicast

Multicast protocols is compliant with IGMPv1/v2/v3 and supports abundant multicast features such as IGMP v2/v3 snooping and fast leave. By analyzing the IGMP messages received, L2 devices establish a mapping between ports and MAC multicast addresses and forward the multicast data accordingly.



2.5 Times Faster
 2.5GbE is 2.5 times faster than standard Ethernet (1GbE), upgrade network performance to boost productivity.



Video Streaming
 Higher bandwidth improves the playback quality of 4K/8K videos.

Works with existing cables
 No special cables or connectors are required to take advantage of 2.5GbE. Simply use your existing CAT5e cables as normal with your new 2.5GbE infrastructure.



Gaming
 No lag when you are Gaming.



Model	AirLive WEB-2TX2402
<p>Hardware</p> <ul style="list-style-type: none"> • Device Interface: 24 x 10/100/1000/2500 RJ45 2x 1.25G/2.5/10G SFP+ 26-port totally Auto MDI/MDIX • Standard IEEE802.3u 100Base-TX IEEE802.3ab Gigabit 1000Base-T IEEE802.3bz 2.5GBase-T IEEE 802.3z 1000BASE-X Gigabit Ethernet (optical fiber) IEEE 802.3ae 10G Ethernet (optical fiber) IEEE802.3x Flow Control and Back Pressure IEEE 802.3ad port trunk with LACP IEEE 802.1D Spanning Tree Protocol IEEE 802.1w Rapid Spanning Tree Protocol IEEE 802.1p Class of Service IEEE 802.1Q VLAN tagging IEEE 802.3az (Efficient and Energy saving Ethernet) • Industry standard compliant EMS: EN61000-4-2 (ESD), IEN61000-4-5 (Surge) • Lightning Surge / ESD Protection: Support Surge Protection: Common Mode 6KV, Differential Mode 2KV(Class C), Electrostatic ESD 8KV Air, 6KV Contact(Class C) • LED Indicators: PWR (power supply), Link/Act (Indicator), RJ45 2.5G (Indicator), SFP+ 10G (Indicator) • Mechanical Solid Metal Housing, Desktop <p>Switch Architecture Performance</p> <ul style="list-style-type: none"> • Switching architecture: Store and Forward Switch Capacity: Back-plan up to 160bps Packet Forwarding Rate; 119.04Mpps Packet Cache: 12Mbit MAC Address: 16K VLAN: VLAN range 1-4094, with a maximum active VLAN of 31 Transfer mode: Store and Forward MTBF:100000 hour <p>Web Management Software Function L2</p> <ul style="list-style-type: none"> • Port Setting: Port Switch Configuration, Port Description Configuration, Port Duplex Configuration, Port Flow Control Configuration, Jumbo Frame up to 16356bytes, EEE • Link Aggregation: Support load sharing strategy based on MAC and IP- MAC addresses, Static and dynamic aggregation groups, Support LACP, Max. 8 members per group • Storm Control: Broadcast, Unknown Multicast, Unknown Unicast 	<ul style="list-style-type: none"> • Port Mirroring: One to one monitor, Many to one monitor, Ingress/Egress/Both, Up to 4 session groups • Port Security: MAC Address Constraints, Protect/Restrict/Shutdown • Port Isolation: Supported • Port Rate-limit: Bandwidth Control • VLAN: Access/Trunk/Hybrid, VLAN Tunnel (Q-in-Q Tunnel), VLAN range 1-4094, maximum active VLAN is 31 • MAC Address: Static MAC address, MAC Address Filtering • Spanning Tree Protocol: STP/RSTP, BPDU Filter, BPDU Guard, Edge Port • Multicast: IGMP Snooping, IGMP V1/V2/V3, Router Port, Static Multicast • QoS: Traffic classification based, Strict priority and WRR, Port Priority, 802.1P Priority, IP DSCP Priority, Supports up to 8 queues per port, Priority Remark • Loopback Detection: Supported • Services: Supported • Security: Supported • DHCP Snooping: Supported • Diagnostics: Supported • Ping: Supported • Electrical Port Test: Supported <p>Management</p> <ul style="list-style-type: none"> • Manager Access: HTTP, SNMP • Manager IP: Static Address, DHCP Client, Manager VLAN, DNS • SNMP: V1/V2C, Community Name, Trap host • SNMP MIB: RFC 1213 MIB-II, RFC 1643 Ethernet MIB, RFC 2863 Interface MIB • User • Firmware: Firmware Upgradable • Configuration: Upload and Download • Save, Restart • Factory Defaults

* Specification will be changed without prior notice

* All trademarks, logos and brand names are the property of their respective owners.



Model	AirLive WEB-2TX2402
<ul style="list-style-type: none">• Transmission Distance 10Base-T: Cat3,4,5 UTP(≤100 meter) 100Base-TX: Cat5 or later UTP(100 meter) 1000Base-TX: Cat5e or later UTP(100 meter) 2500Base-TX: Cat5e or later UTP(100 meter)• Fiber Medium: 1000BASE-SX: 62.5μm MMF (Multimode optical fiber) (Minimum range: 2m~275m) or 50μm MMF 1000BASE-LX: 62.5μm/50μm MMF (Minimum range: 2m~550m) or 10μm SMF (Minimum range: 2m~5km) 2500BASE-X: G.652D SMF (Single-mode optical fiber) (Minimum range: 2m~500m or 2m~5Km) 10GBASE-SR: OM1/OM2/OM3 or above MMF (Operating range: 2m~300m) 10GBASE-LR: IEC and B1.1 and B1.3 SMF (Minimum range: 2m~10km) <p>Power</p> <ul style="list-style-type: none">• Power Input: AC 100~240V• Power Usages Max: 36W <p>Environment</p> <ul style="list-style-type: none">• Operating Temperature: 0°C to +40°C• Storage Temperature: -40°C to +70°C• Working Humidity: 10%~90%, non-condensing• Storage Humidity: 5%~95%, non-condensing <p>Standard package of switch</p> <ul style="list-style-type: none">• Product size: 44.0 x 20.5 x 4.4 cm(L*W*H)• Package size: 50.0 x 29.0 x 8.5 cm(L*W*H)• Package Weight: N.W: 2.61Kgs; G.W: 3.12Kgs• Package content: 1 x Switch, 1 x Power cord, 1 x QIG. <p>Standard carton package</p> <ul style="list-style-type: none">• Quantity: 5pcs / 1 carton• Dimensions 52.0 x 44.5 x 31.0cm (L*W*H)• Weight 16.6Kgs (G.W) <p>Ordering Information</p> <ul style="list-style-type: none">• Model: WEB-2TX2402• Name: 26-port 2.5Gbps WebSmart Multi Gigabit Switch, incl. 24 x 2.5G RJ45 and 2x SFP+ 10G, Plug and Play, Auto-Negotiation• Related product AirLive USB-25G USB3.1/3.0 to 2.5Gbps Base-T adapter	

* Specification will be changed without prior notice

* All trademarks, logos and brand names are the property of their respective owners.

